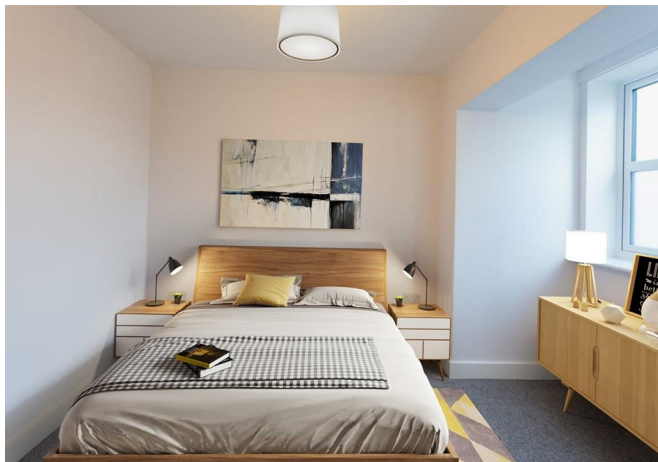




Reigate Hill, Reigate

£1,350 Per Month





“

With Reigate Station on its doorstep, Reigate Hill House offers convenience for commuters as well as being within walking distance to the town centre. There is a choice of one & two bedroom apartments in this landmark building with parking allocated to selected homes.

”



****PHOTOS AND MARKETING ARE FOR ILLUSTRATIVE PURPOSES ONLY****

We are delighted to present this luxury one-bedroom apartment, situated on the third floor of the highly regarded Reigate Hill House development.

The property opens into a welcoming hallway leading through to a bright, open-plan living space finished with light oak-effect wood laminate flooring. The contemporary kitchen is fitted with sleek white high-gloss base and wall units and comes fully equipped with integrated appliances, including an oven, ceramic hob, fridge/freezer and washer/dryer.

The double bedroom benefits from fitted carpets and built-in wardrobes, while the luxury Roca bathroom suite features a monsoon shower over the bath, complemented by elegant Porcelanosa tiling.

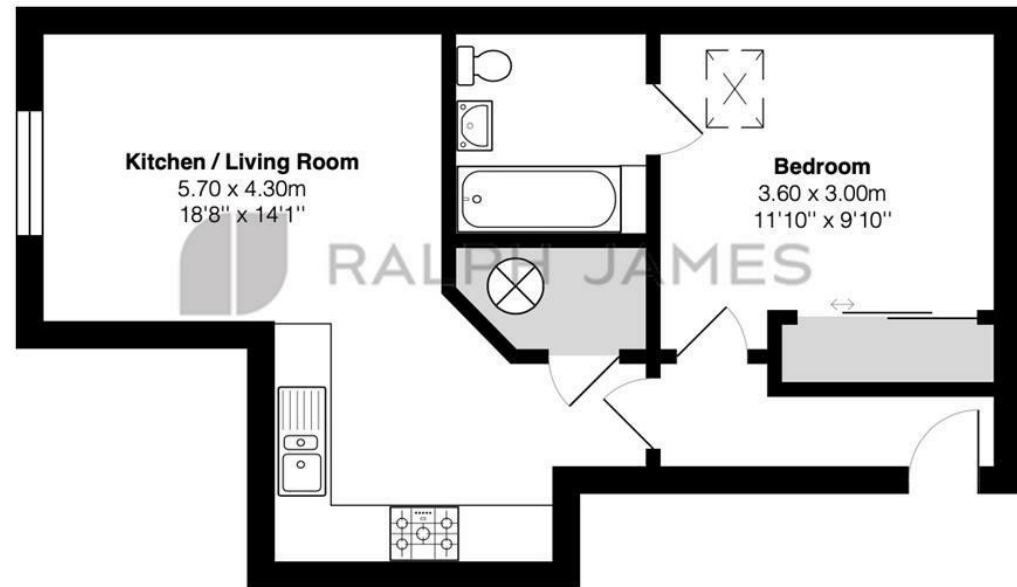
Further highlights include triple-glazed windows throughout, a secure video entry system and an allocated parking space.

Reigate Hill House is a modern, high-specification apartment block, ideally located within a short walk of Reigate town centre and Reigate station—perfect for commuters and those looking to enjoy the town's excellent selection of shops, restaurants, pubs and cafés. Residents are welcomed by a stylish communal foyer and benefit from some of the finest rental apartments available in Reigate, finished to an exceptional standard throughout.



Need to know

- One double bedroom
- Triple glazing throughout
- Smart controlled heating
- Central Reigate
- High Spec Reigate Development
- Super fast broadband
- Individually allocated parking
- Built in wardrobe
- Council Tax: C
- EPC: B



Reigate Hill House, Reigate

FOR ILLUSTRATIVE PURPOSES ONLY.

Whilst every attempt has been made to ensure the accuracy of the floor plan shown, all measurements, positioning, fixtures, features, fittings and any other data shown are an approximate interpretation for illustrative purposes only and are not to scale.

No responsibility is taken for any error, omission, miss-statement or use of data shown.

The above statement applies to both 'Still Moving London LTD' and the Company or individual displaying this floor plan.

Unauthorised reproduction prohibited.

Â© Still Moving London LTD (www.stillmoving.london)



Interested?

redhill@ralphjames.co.uk

01737 765 555

1

ralphjames.co.uk